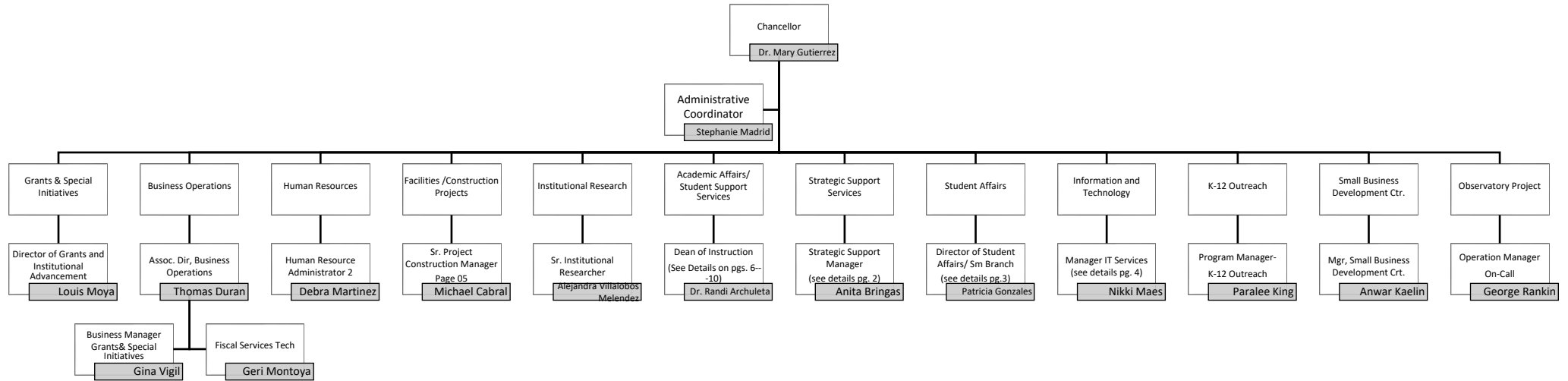




# ORGANIZATIONAL CHART

## ADMINISTRATION



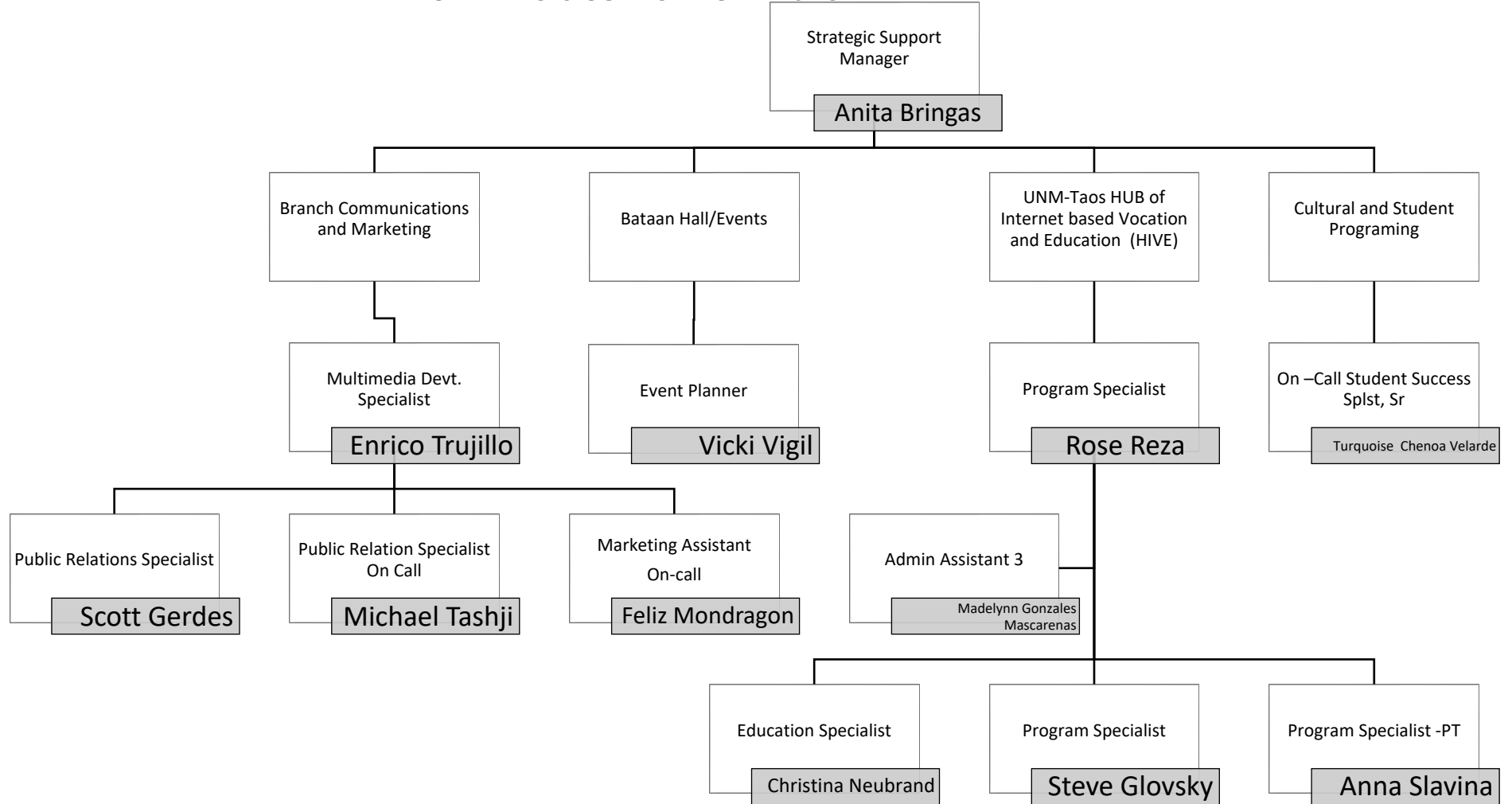
Please Note: Subject to change based on funding and organizational needs. Job titles reflect official or working titles.

UPDATED: January 2024



# ORGANIZATIONAL CHART

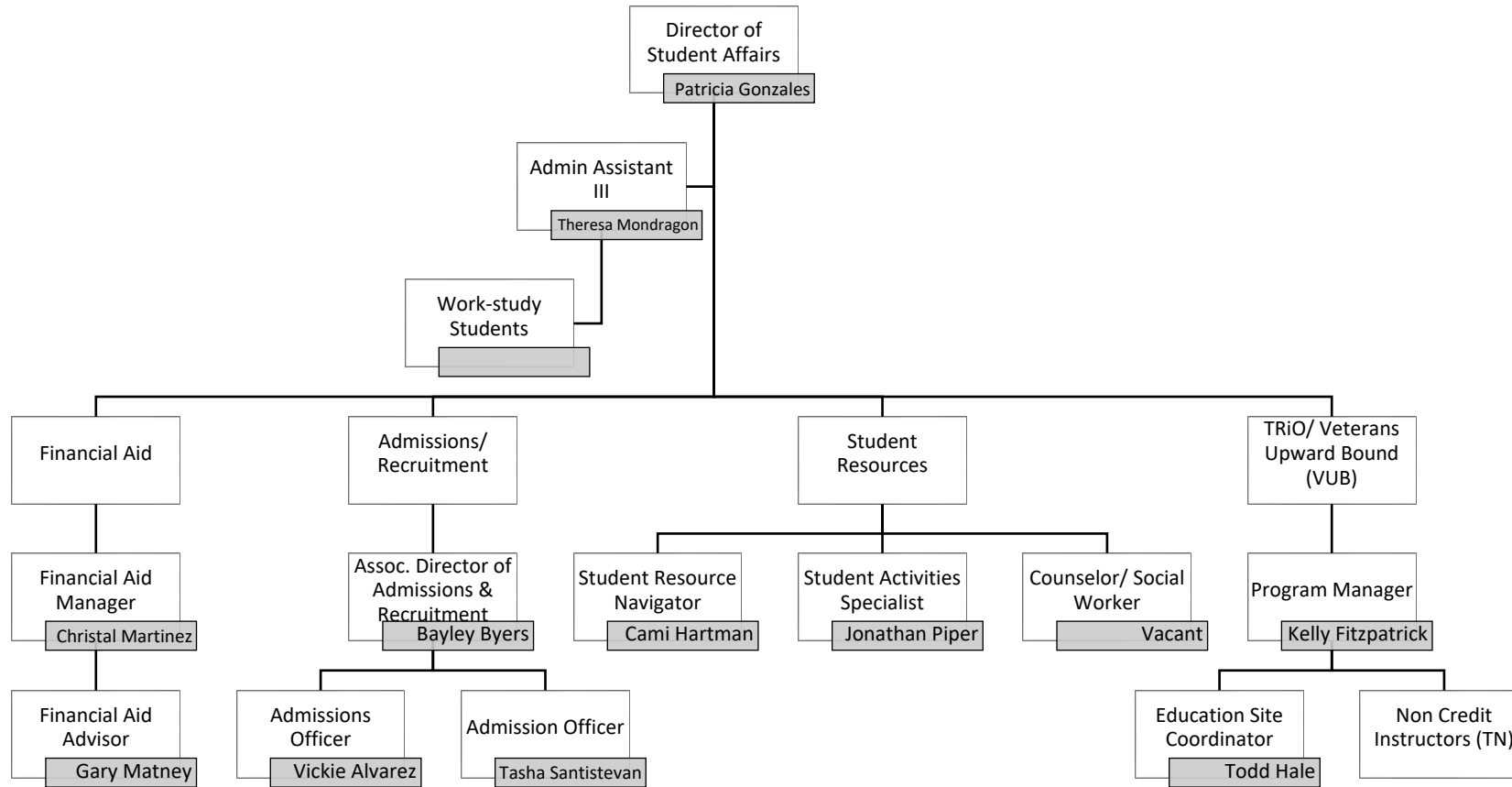
## STRATEGIC SUPPORT SERVICES





# ORGANIZATIONAL CHART

## STUDENT AFFAIRS

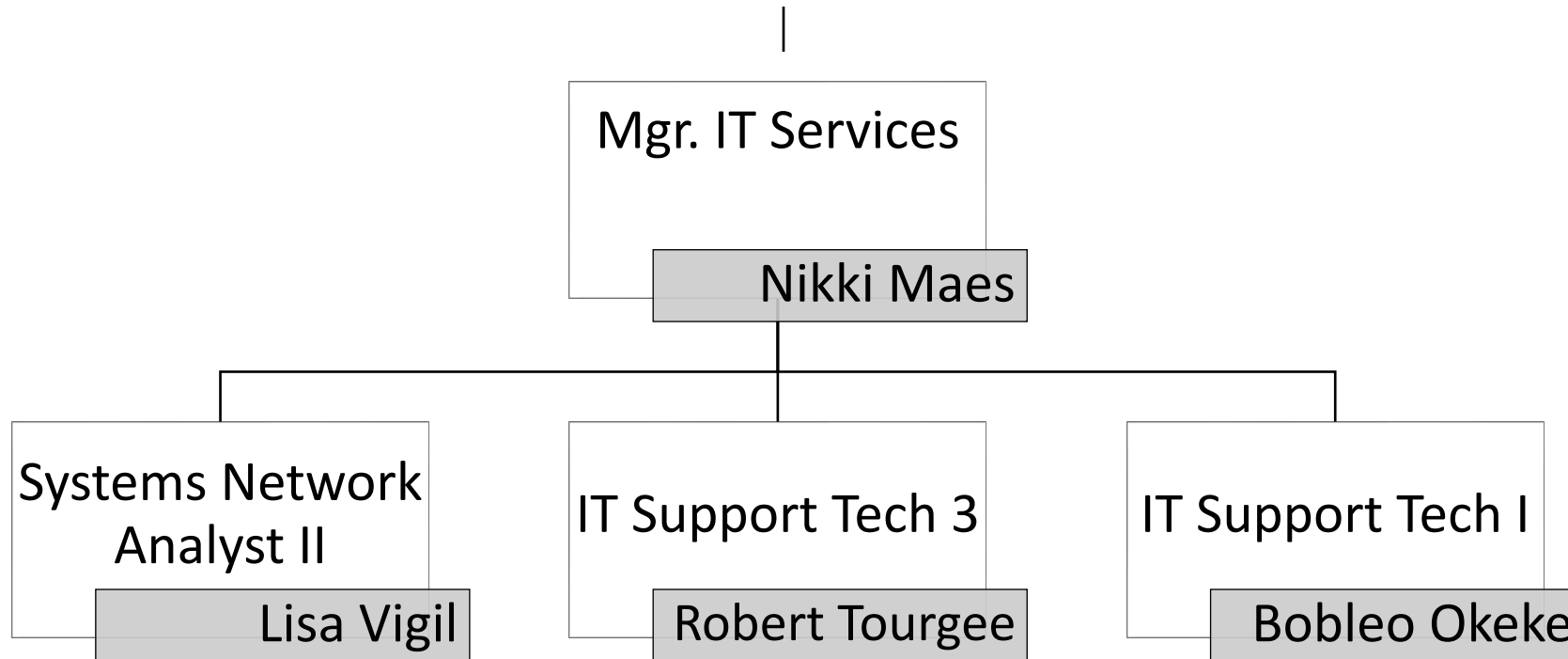


*Please Note: Subject to change based on funding and organizational needs. Job titles reflect official or working titles.*

*UPDATED: January 2024*



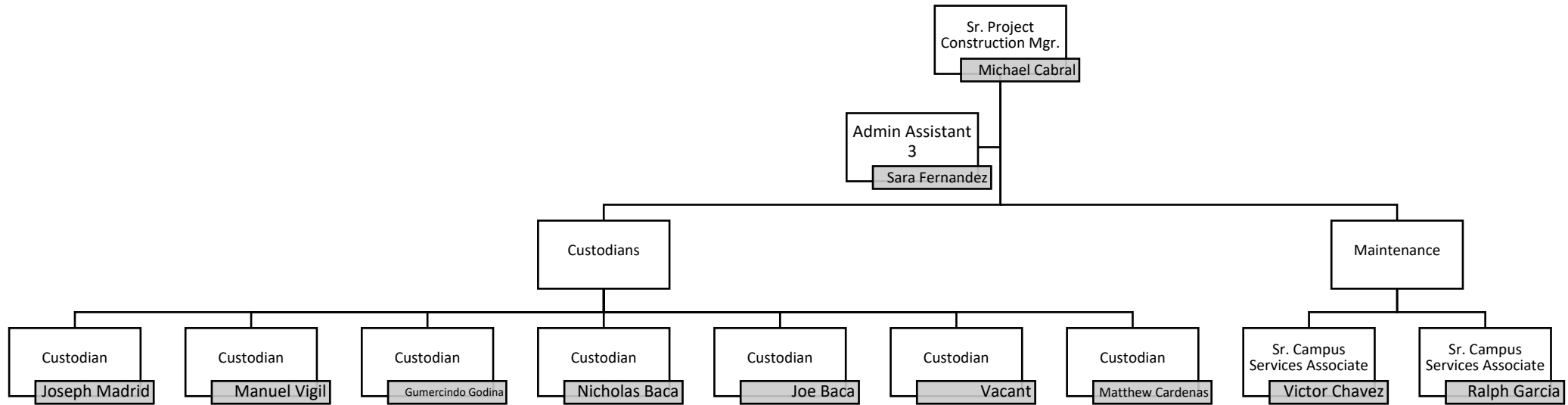
**ORGANIZATIONAL CHART**  
**INFORMATION TECHNOLOGY SERVICES**





# ORGANIZATIONAL CHART

## FACILITIES OPERATIONS

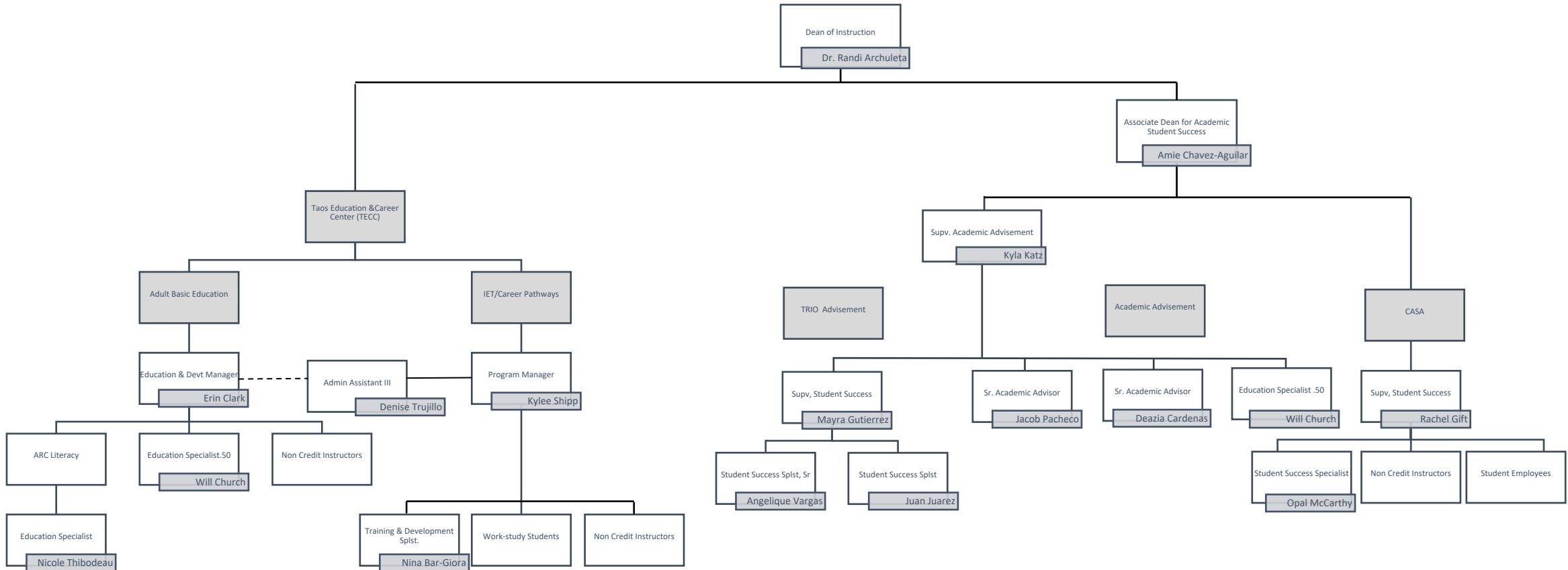


*Please Note: Subject to change based on funding and organizational needs. Job titles reflect official or working titles.*

**UPDATED: January 2024**



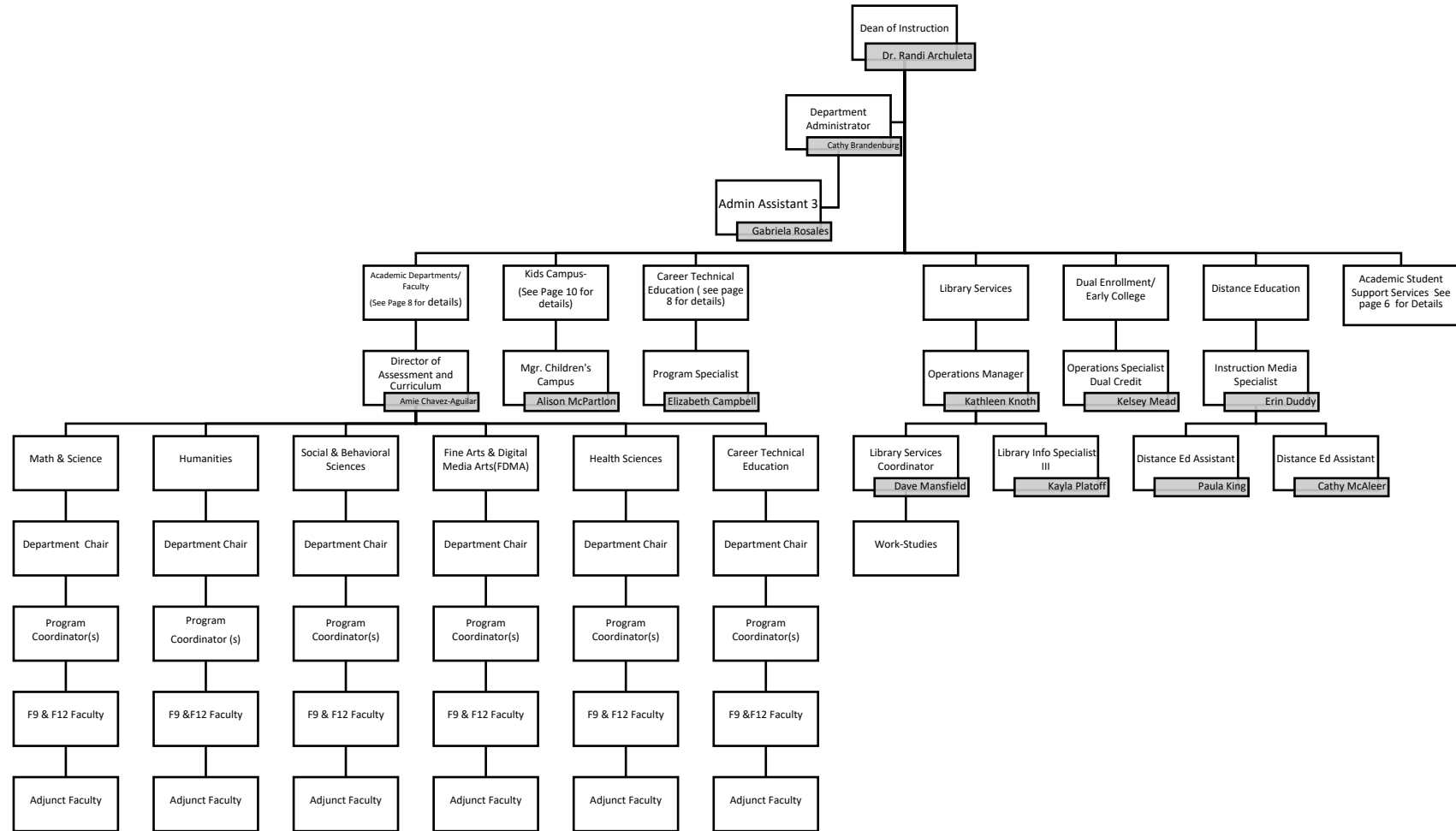
# ORGANIZATIONAL CHART Academic Student Support Services





# ORGANIZATIONAL CHART

## Office of Academic Affairs

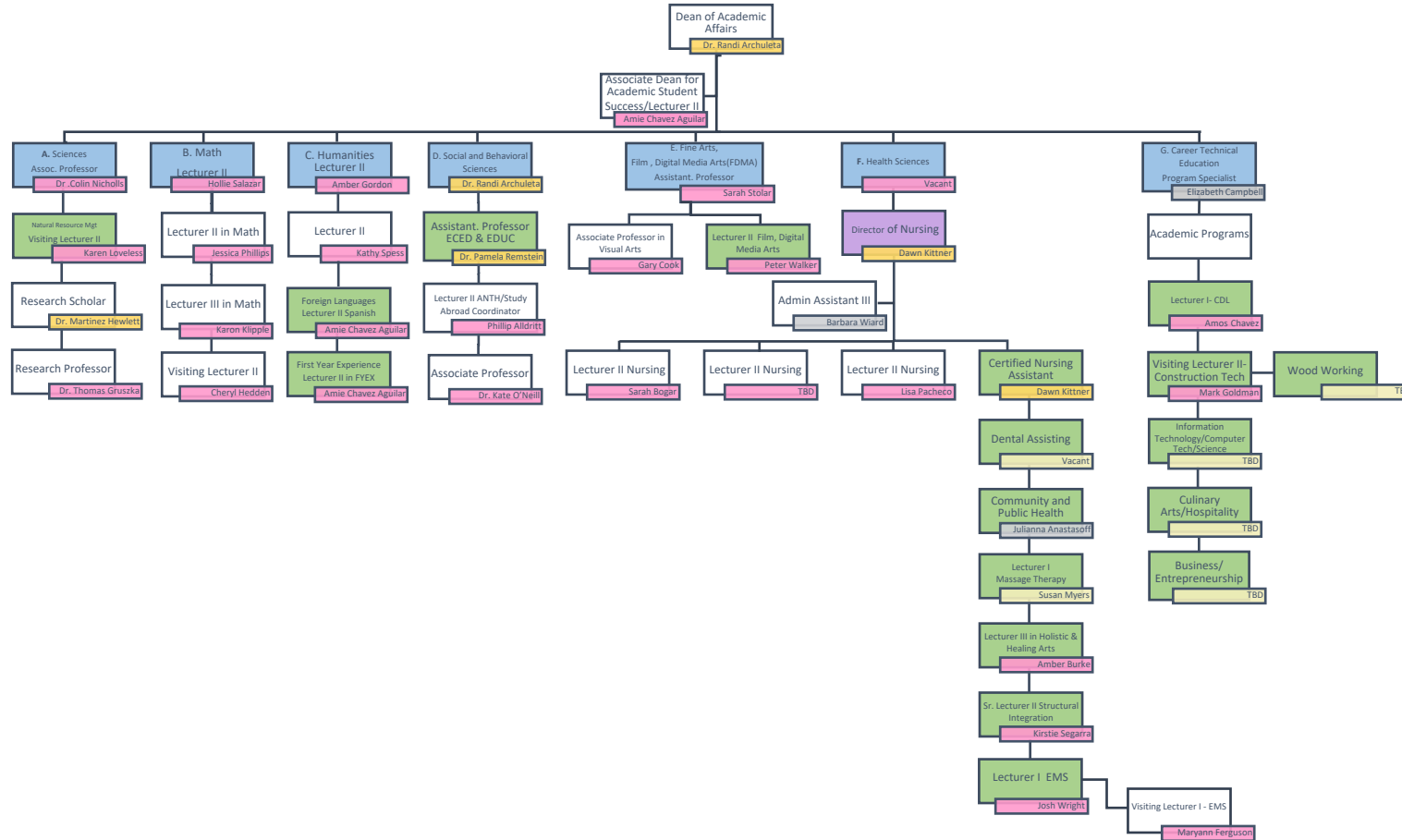




# ORGANIZATIONAL CHART

## Office of Academic Affairs Academic Department & Faculty

- Chair of Academic Dept
- Director
- Program Coordinator
- F12 Faculty
- F-9 Faculty
- Adjunct Faculty
- Staff



**A & B** . Mathematics, Biology, Chemistry, Earth & Planetary Science, Environmental Science, Geography, Geology, Physics

**C** . American Studies, Classical Studies, History, Honors, Philosophy, Religious Studies, Women's/Gender Studies

**D** . Anthropology, Criminal Justice, Economics, Human Services, LSAA, Political Science, Psychology, Sociology

**E** . Fine Arts, Film and Digital Media Arts

**F** . Nursing, Certified Nursing Assistant, Emergency Medical Science, Community Health Worker, Dental Assistant, Massage, Holistic Health & Healing Arts

**G** . Workforce Development, CDL, Entrepreneurship, IT, Hospital, Culinary Arts, Construction Technology, Computer Technology Office Business Technology

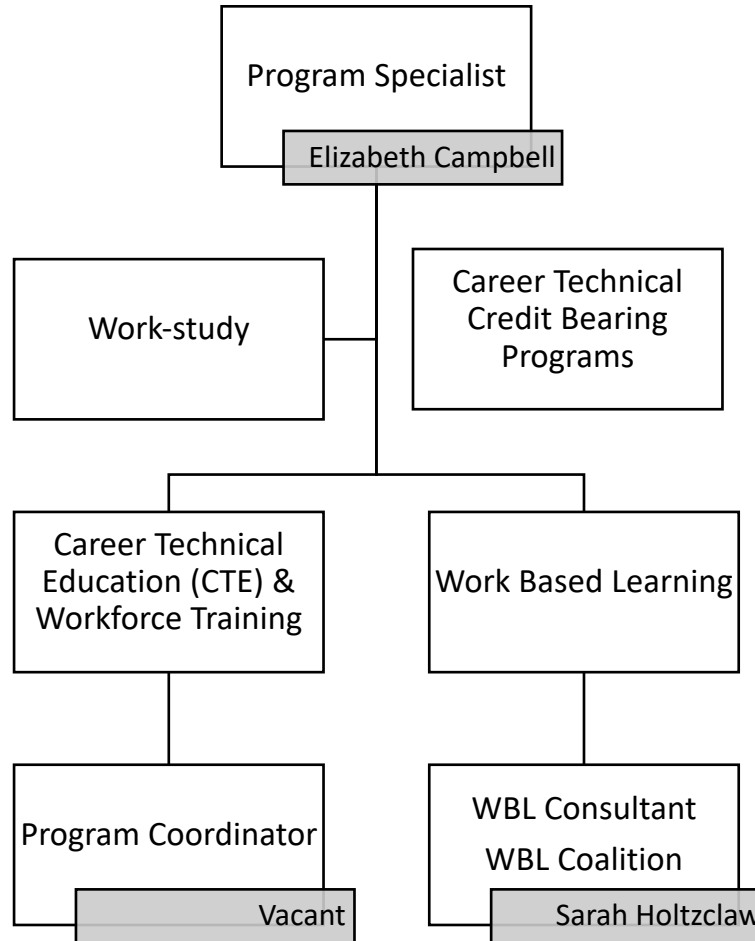
NOTES: UNM-Taos employs over 80 adjunct faculty members across the six academic areas. Adjunct faculty members change semester to semester. Please contact the Office of Academic Affairs for details. Adjunct faculty that are included on this organizational chart serve as PCs for their respective program. OAA Faculty Organizational Charts do not reflect official supervisory structure. All faculty members regardless of status, report directly to Dean of Academic Affairs.





## ORGANIZATIONAL CHART

### OFFICE OF ACADEMIC AFFAIRS – CAREER TECHNICAL EDUCATION





# ORGANIZATIONAL CHART

## OFFICE OF ACADEMIC AFFAIRS – KIDS CAMPUS

